

Double Basin Simple Drain[®]

NO LEAKS. NO CLOGS. NO HASSLE.



PATENT PENDING
ADA 606.5 COMPLIANT

Installation Guide

STOP

REVIEW BASIC CONCEPTS
BEFORE INSTALLING: PAGES 1-2

Congratulations! You've purchased the most fixable solution for plumbing today.

WHAT IS IN THE KIT:

- 1 (2) Rubber tubes: solid, antimicrobial, EPDM rubber. Made to last. Compatible with all common household cleaners.
- 2 (1) TEE with dishwasher port: Has three tube ports and one dishwasher port. If using with dishwasher, remove plug first.
- 3 (1) Trap loop: Creates proper trap shape using included depth tab.
- 4 (3) Threaded fittings (6 half pieces): Connects tubes to 1.5" male thread.
- 5 (4) Hand-tighten clamps: Stainless steel
- 6 (1) Disinfecting clip: Allows for easy disinfection. Learn more at SimpleDrain.com



Standard P-trap

Pages: 3-4

P-trap w/ disposal

Pages: 5-6

P-trap w/ disposal

Pages: 7-8

S-trap

Pages: 9-10

S-trap w/ disposal

Pages: 11-12

S-trap w/ disposal

Pages: 13-14

REQUIRED READ BEFORE INSTALL

SEE BACK COVER FOR GLOSSARY AND CONNECTING DISHWASHER

SELECT WHAT BEST FITS YOUR SINK SETUP

AND

GO!

BASIC CONCEPTS CUTTING, FITTING, CLAMPING AND ATTACHING HOSES

HOW TO CUT TUBE

Pinch tube, snip a small hole in valley, and cut around circumference to leave a clean edge. DO NOT try and cut through in one chop.



ATTACHING THREADED FITTING

Capture last rib between male and female half of a fitting by locking one tab and then carefully push the other into place.



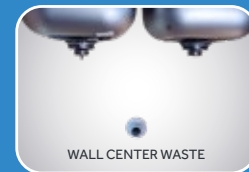
THREAD TO SINK OR WASTE

Thread fitting by hand onto bottom of sink (shown) or onto waste until snug. The goal is to compress the rubber rib to create a seal. Never use a wrench. It may help to twist counterclockwise for 1/4 turn to align the threads.



CLAMPING TUBE TO TEE

Slide clamp onto TEE and orient it so that the other ports are facing the correct direction. Push TEE into the cuff until it can go no further and tighten by hand until snug. Pull to make sure it does not move.



WALL CENTER WASTE

Standard P-trap
Pages: 3-4



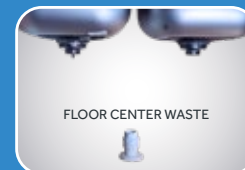
WALL OPPOSITE DISPOSAL

P-trap with disposal
Pages: 5-6



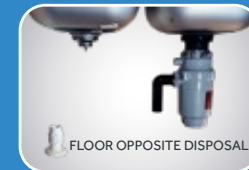
WALL BEHIND DISPOSAL

P-trap with disposal
Pages: 7-8



FLOOR CENTER WASTE

S-TRAP
Pages: 9-10



FLOOR OPPOSITE DISPOSAL

S-trap with disposal
Pages: 11-12



FLOOR BEHIND DISPOSAL

S-trap with disposal
Pages: 13-14

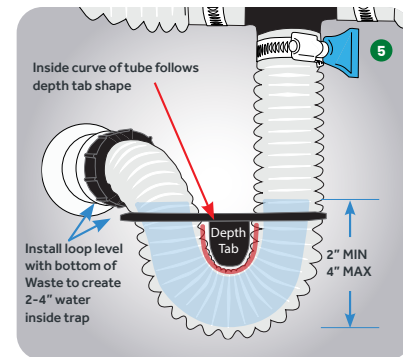
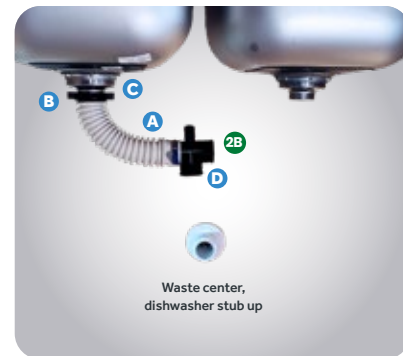
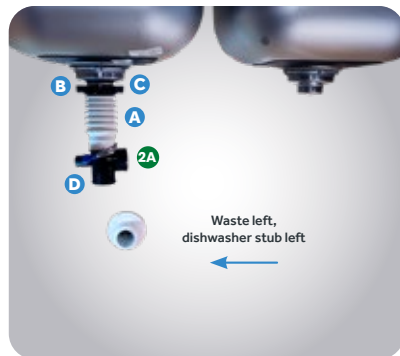
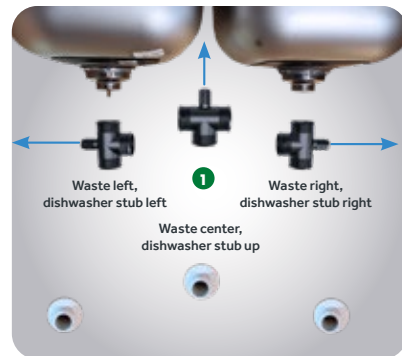
Confused don't be.
Watch our how-to videos!





Standard P-trap — Installation Guide

Read the basic concepts section on pages 1-2. Then follow the instructions below to install your double basin Simple Drain. **The green and blue bubble will guide your success.**



- 1 Set aside one of the white rubber tubes and do not cut until STEP 8.
- 2 Locate your waste pipe. The TEE will go under the sink drain closest to the waste. If generally centered, the TEE will be located centrally. 1
- 3 Trim hose to length. A
 - For left/right install, count 8 ribs from either end and trim. If you need to re-cut, 6 or 7 will work.
 - For a center install, count 20 ribs and trim.
- 4 Attach threaded fitting. B

- 5 Thread onto sink drain, then push TEE into the cuff and attach with clamp. See 2A for left/right install or 2B for center. 2A 2B C D
- 6 Using the tube *you already cut*, push the cuff end over the TEE and measure over to the other side of the sink and note which rib meets the drain. 3A or 3B
- 7 Remove tube from TEE, trim to length, attach threaded fitting, thread onto sink, and clamp to TEE.
- 8 FORM THE P-TRAP 4A 4B
 - Push the cuff of the uncut tube onto the TEE.
 - Push the loop into the valley of the tube so it is level with the bottom of the waste.

- Push the depth tab down on the loop. Bend the tube into a tight U shape making sure the inside curve follows the depth tab. 5
- Turn tube toward waste for final measurement. Add a few ribs in case you need to re-cut. 4A 4B
- Remove loop, pull tube off TEE, and then repeat STEPS 4 and 5.
- 9 Thread the tube onto the waste and reattach to bottom of TEE with hand-tighten clamp. Reapply the loop so that your trap is properly formed. 5
- 10 Ensure all connections are tight. Check for leaks and adjust as needed. Apply disinfecting clip to trap loop for future use.



proceed if using no disposal, waste can be left, right or centered

STANDARD P-TRAP
 waste can be left, right or centered

Confused don't be.

Watch our how-to videos!



P-trap with disposal — Installation Guide



proceed if waste is located opposite disposal

P-TRAP WITH DISPOSAL
 waste opposite disposal

Read the basic concepts section on pages 1-2. Then follow the instructions below to install your double basin Simple Drain. **The green and blue bubble will guide your success.**



1 Set one tube aside until you finish STEP 7. **1**

2 Point dishwasher stub on TEE away from disposal and just below the disposal outlet to create a downward slope as shown by dashed blue line. **2A**

Push tube onto the TEE and hold in position below the drain. Mark the rib where it meets the sink drain. **Add an extra rib or two in case you need to re-cut and trim tube.** **3A A**

3 Attach threaded fitting. **B**

4 Thread onto sink drain and then attach TEE with clamp. It should look something like the inset box **3A C D**

5 Using remaining portion of the first tube, push cuff onto the side of the TEE facing the disposal and measure over to the disposal outlet so that 4 ribs go over the outlet. If outlet is straight, run tube directly across and ensure tube slopes down to TEE. Remove tube from TEE and then cut to length. **4A**

6 Clamp cuffed end to TEE. For cut end, put clamp into first valley, push 4 ribs onto disposal outlet, and clamp tightly. **5A**

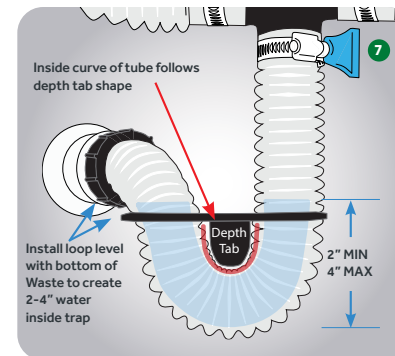
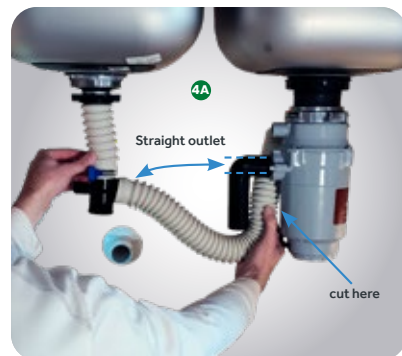
7 FORM THE P-TRAP

- To form the trap, hang the uncut tube from the TEE and push loop into the valley of the tube where it is level with bottom of waste. **6**

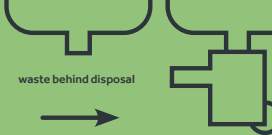
8 Push the depth tab down on the loop. Bend the tube into a tight U shape making sure the inside curve follows the depth tab. **6**

- Turn tube toward waste for final measurement. **7**
- Remove from TEE and cut to length.
- Install threaded fitting and thread to waste.

9 Attach tube to bottom of TEE with hand-tighten clamp and ensure all other connections are tight. Check for leaks and adjust as needed. Apply disinfecting clip to trap loop for future use.



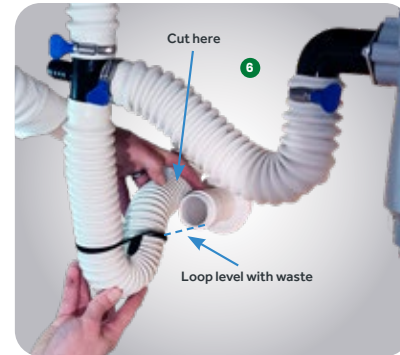
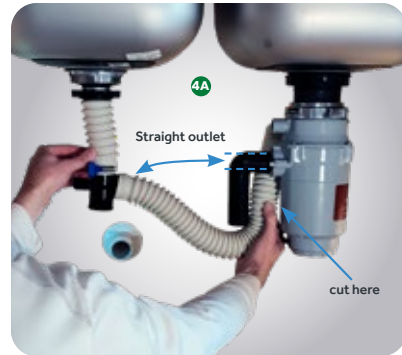
P-trap with disposal — Installation Guide



proceed if waste is located behind disposal

P-TRAP WITH DISPOSAL
 waste behind disposal

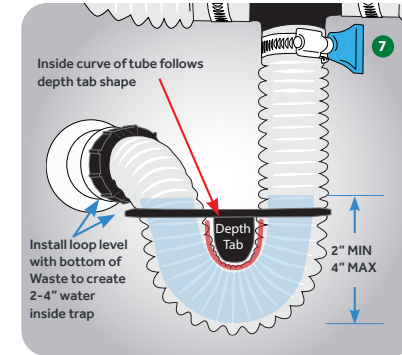
Read the basic concepts section on pages 1-2. Then follow the instructions below to install your double basin Simple Drain. **The green and blue bubble will guide your success.**



- 1 Set one tube aside until you finish STEP 5. **1**
- 2 Trim tube 4 ribs in from the cuff. **A**
- 3 Clamp to disposal outlet:
 - ELBOW outlet: Push cuff onto top of TEE (with dishwasher stub pointing toward disposal) and clamp. Push clamp into the first valley on raw end of tube then slide all 4 ribs over disposal elbow and tighten. **2B D**
 - STRAIGHT outlet: With dishwasher stub upward, push cuff onto side of TEE facing disposal and clamp. Slide 4 ribs over disposal outlet and clamp in the first valley on the raw end. **2C**

- 4 Attach to sink:
 - Using remaining portion of the first tube, push cuff onto TEE facing the sink drain and measure. Remove tube from TEE and cut to length. **3B**
 - Attach threaded fitting. **B**
 - Thread onto sink drain. **C**
 - Setup should look like either figure **2C** or **4B**
- 5 FORM THE P-TRAP
 - To form the trap, hang the uncut tube from the TEE and push loop into the valley of the tube where it is level with bottom of waste. **6**

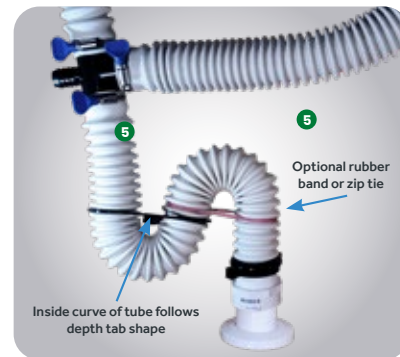
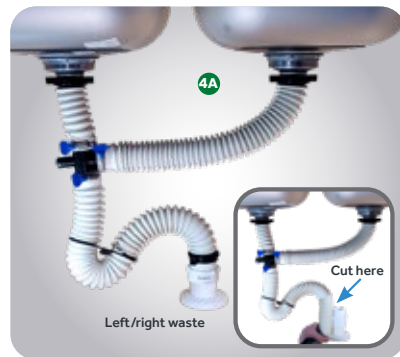
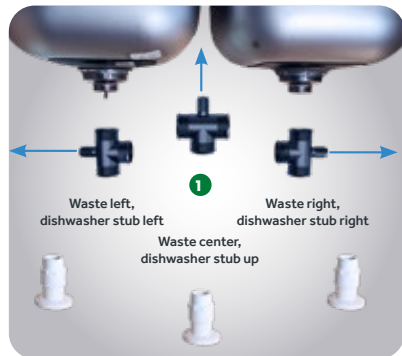
- 6 Push the depth tab down on the loop. Bend the tube into a tight U shape making sure the inside curve follows the depth tab. **6**
 - Turn tube toward waste for final measurement. **7**
 - Remove from TEE and cut to length.
 - Install threaded fitting and thread to waste.
- 7 Attach tube to bottom of TEE with hand-tighten clamp and ensure all other connections are tight. Check for leaks and adjust as needed. Apply disinfecting clip to trap loop for future use.





S-trap — Installation Guide

Read the basic concepts section on pages 1-2. Then follow the instructions below to install your double basin Simple Drain. **The green and blue bubble will guide your success.**



floor waste can be left, right or centered

proceed if using no disposal, floor waste can be left, right or centered

S-TRAP
 floor waste can be left, right or centered

- 1 Set aside one of the white rubber tubes and do not cut until STEP 8.
- 2 Locate your waste pipe. The TEE will go under the sink drain closest to the waste. If generally centered, the TEE will be located centrally. 1
- 3 Trim hose to length. A
 - For left/right install, count 8 ribs from either end and trim. If you need to re-cut, 6 or 7 will work.
 - For a center install, count 20 ribs and trim.
- 4 Attach threaded fitting. B
- 5 Thread onto sink drain, then push TEE into the cuff and attach with clamp. See 2A for left/right install or 2B for center. 2A 2B C D

- 6 Using the tube you already cut, push the cuff end over the TEE and measure over to the other side of the sink and note which rib meets the drain.
- 7 Remove tube from TEE, trim to length, attach threaded fitting, thread onto sink, and clamp to TEE.
- 8 FORMING THE S-TRAP 4A 4B

Hang the uncut tube from the TEE and form an "S" shape while holding the other end next to the waste to measure the length. Use the loop and depth tab to help make sure the trap portion of the "S" is correct. Helpful tips:

 - Try to keep the bottom of the trap above the top of the waste if possible.

- Leave extra length when you cut because you may want make adjustments once installed.
 - Remove tube from TEE before you cut to length.
 - S-traps are never to code, but it is still important to form a proper trap using the loop and depth guide as shown.
- 9 Once satisfied with the trap shape, measure, cut, and attach the threaded fitting to the tube.
 - 10 Thread tube to the waste. Attach tube to bottom of TEE with hand-tighten clamp and ensure all other connections are tight. Check for leaks and adjust as needed. Apply disinfecting clip to trap loop for future use. Optional rubber band or zip tie may help keep upper bend in place. 7

Confused don't be.



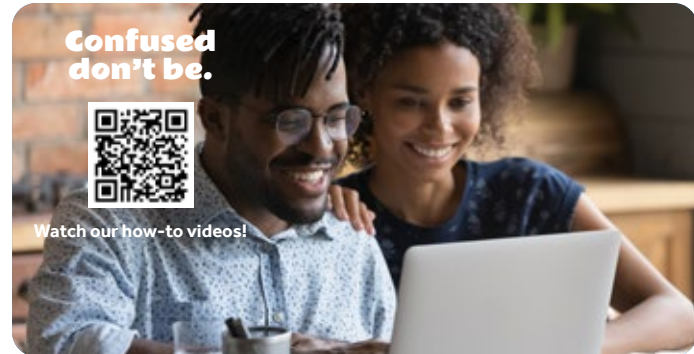
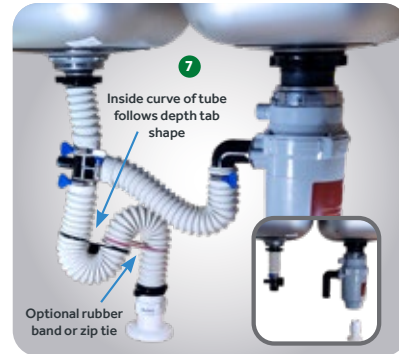
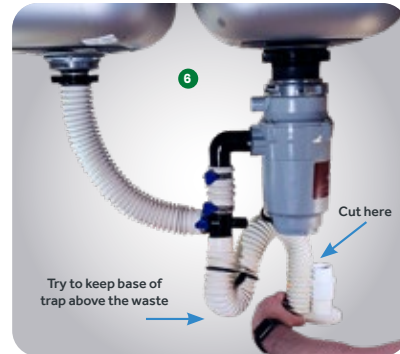
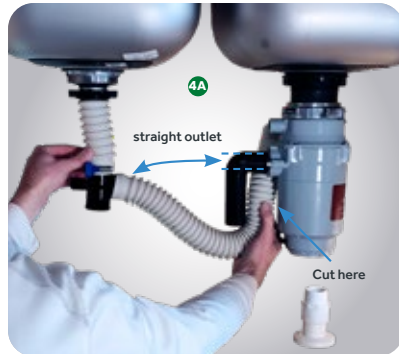
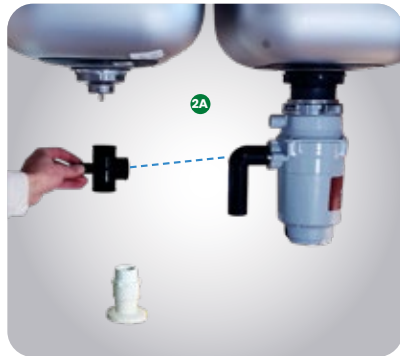
Watch our how-to videos!



P.O.
 photo to come

S-trap with disposal — Installation Guide

Read the basic concepts section on pages 1-2. Then follow the instructions below to install your double basin Simple Drain. **The green and blue bubble will guide your success.**



proceed if floor waste is located away from disposal

S-TRAP WITH DISPOSAL
 waste away from disposal

- 1 Set one tube aside until you finish STEP 8. **1**
- 2 Point dishwasher stub on TEE away from disposal and just below the disposal outlet to create a downward slope as shown by dashed blue line. **2A**
- 3 Push tube onto the TEE and hold in position below the drain. Mark the rib where it meets the sink drain. **Add an extra rib or two in case you need to re-cut and trim tube.** **3A A**
- 4 Attach threaded fitting. **B**
- 5 Thread onto sink drain and then attach TEE with clamp. It should look something like the inset box **3A C D**

- 6 Using remaining portion of the first tube, push cuff onto the side of the TEE facing the disposal and measure over to the disposal outlet so that 4 ribs go over the outlet. If outlet is straight, run tube directly across and ensure tube slopes down to TEE. Remove tube from TEE and then cut to length. **4A**
- 7 Clamp cuffed end to TEE. For cut end, put clamp into first valley, push 4 ribs onto disposal outlet, and clamp tightly. **5A**

FORMING THE S-TRAP

Hang the uncut tube from the TEE and form an "S" shape while holding the other end next to the waste to measure the length. Use the loop and depth tab to help make sure the trap portion of the "S" is correct. Helpful tips: **6 7**

- Try to keep the bottom of the trap above the top of the waste if possible. **6**

- Leave extra length when you cut because you may want make adjustments once installed.
- Remove tube from TEE before you cut to length.
- S-traps are never to code, but it is still important to form a proper trap using the loop and depth guide as shown.

9 Once satisfied with the trap shape, measure, cut, and attach the threaded fitting to the tube.

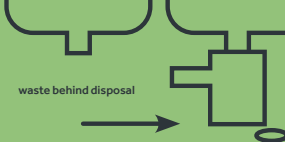
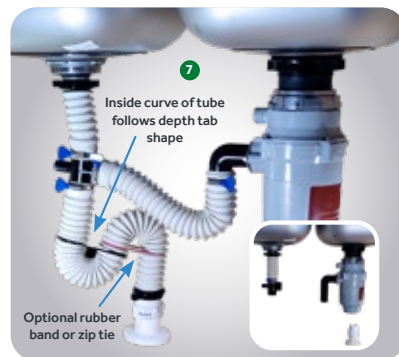
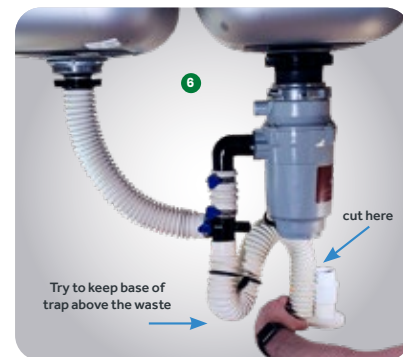
10 Thread tube to the waste. Attach tube to bottom of TEE with hand-tighten clamp and ensure all other connections are tight. Check for leaks and adjust as needed. Apply disinfecting clip to trap loop for future use. Optional rubber band or zip tie may help keep upper bend in place. **7**



P.O.
 photo to come

S-trap with disposal — Installation Guide

Read the basic concepts section on pages 1-2. Then follow the instructions below to install your double basin Simple Drain. **The green and blue bubble will guide your success.**



proceed if floor waste is located behind disposal

S-TRAP WITH DISPOSAL
 waste behind disposal

1. Set one tube aside until you finish STEP 4. **1**

2. Trim tube 4 ribs in from the cuff. **A**

3. Clamp to disposal outlet:

- ELBOW outlet: Push cuff onto top of TEE (with dishwasher stub pointing toward disposal) and clamp. Apply a second clamp into the first valley on the raw end of the tube. Push ribs over the elbow until it hits the TEE and tighten. **2A D**
- STRAIGHT outlet: With dishwasher stub upward, push cuff onto side of TEE facing disposal and clamp. Apply a second clamp into the first valley on the raw end of the tube. Push ribs over disposal outlet until it hits the TEE and tighten. **2C**

4. Attach to sink:

- Using remaining piece of tube from STEP 2, push cuff onto TEE facing the sink drain and measure. Remove tube from TEE and cut to length. **3B**
- Attach threaded fitting. **B**
- Thread onto sink drain. **C**
- Setup should look like either figure **2C** or **4B**

5. FORMING THE S-TRAP

Hang the uncut tube from the TEE and form an "S" shape while holding the other end next to the waste to measure the length. Use the loop and depth tab to help make sure the trap portion of the "S" is correct. Helpful tips: **6 7**

- Try to keep the bottom of the trap above the top of the waste if possible. **6**

- Leave extra length when you cut because you may want make adjustments once installed.
- Remove tube from TEE before you cut to length.
- S-traps are never to code, but it is still important to form a proper trap using the loop and depth guide as shown.

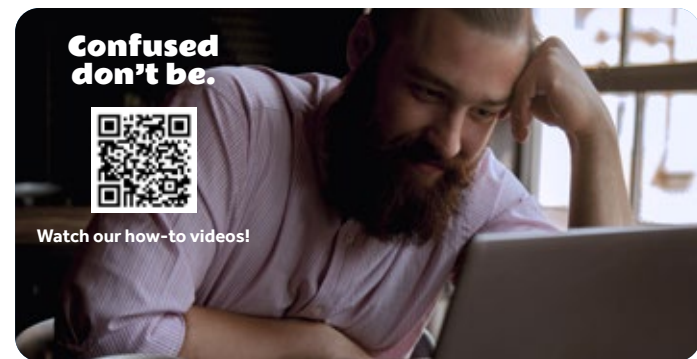
6. Once satisfied with the trap shape, measure, cut, and attach the threaded fitting to the tube.

7. Thread tube to the waste. Attach tube to bottom of TEE with hand-tighten clamp and ensure all other connections are tight. Check for leaks and adjust as needed. Apply disinfecting clip to trap loop for future use. Optional rubber band or zip tie may help keep upper bend in place. **7**

Confused don't be.



Watch our how-to videos!



Connect Dishwasher
(If necessary)



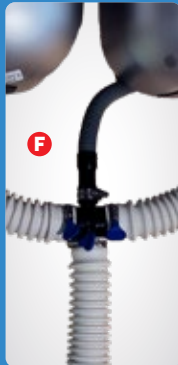
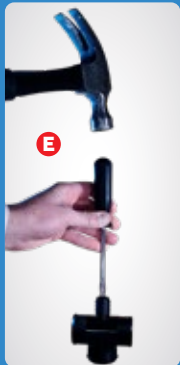
IMPORTANT! If you have a disposal

DO NOT remove knock-out plug on the Simple Drain® TEE. Instead, connect dishwasher drain tube to your disposal following manufacturer instructions.

If you have a dishwasher but do not have a disposal, you must remove the knock-out plug on the Simple Drain® TEE first. Failure to do so could cause damage to the dishwasher, drain tube, TEE, sink cabinet, or all of the above.

Remove knock-out plug by tapping on the top with a hammer and screwdriver to break the plug. Pry out remaining pieces until smooth. **E**

Push dishwasher drain tube over the barb on the TEE and attach with clamp (not included). **F**



Double Basin
Simple Drain®
NO LEAKS. NO CLOGS. NO HASSLE.

Under the sink knowledge

GLOSSARY

- 1 CUFF:** Smooth end of the tube.
- 2 DEPTH TAB:** Curved tab on the trap loop that shows how deep to make the trap for proper flow.
- 3 RIB:** Raised area of tube. Also might be called "bumps" or "ridges." Acts as a sealing surface when used with our threaded fitting.
- 4 VALLEY:** Low spot between two ribs.
- 5 SINK DRAIN:** Male threaded bottom of the sink. Simple Drain® threaded fittings will connect here using one rib to create a water-tight seal.
- 6 WASTE:** The 1.5" male threaded connection to your home's drain system. Should be in the wall (P-TRAP), but may be in the floor (S-TRAP).
- 7 P-TRAP:** Wall-mounted trap that captures water to prevent sewer gas backup.
- 8 S-TRAP:** Floor-mounted trap that captures water to prevent sewer gas backup. S-TRAP installations, regardless of the product used, do not meet code as they can go dry during normal use.
- 9 DISPOSAL OUTLET:** The straight or elbowed drain outlet on the side of your disposal. ****Make sure that the area you clamp to is smooth and does not have embossed print or other imperfections as this will result in a poor seal and potential leaks.**

